

# Visitor Information

## Location

Nordic Northwest  
8800 SW Oleson Road  
Portland, OR 97223

## Hours & Info

9am-5pm Mon-Fri  
9am-3pm Sat-Sun

Admission is free and available during daylight hours. Docent led troll walks and tours of the cultural center are available.

Gift shop and cafe welcome visitors.  
Closed: Thanksgiving Day, Christmas Eve, Christmas Day, New Year's Day, Martin Luther King Jr. Day, Memorial Day, Independence Day, and Labor Day.

## Parking

Nordic NW has two ample parking lots (50 spaces) with overflow parking available on 80th and Scholls Ferry. The upper lot includes one step up a curb and has a slightly steep entrance. The entrances to Nordia House are ADA accessible via ramp.

## Trail Accessibility

Fine gravel paths to the troll are traversable by walking assistance devices and wheelchairs, but may be difficult. The distance to the troll from both the upper and lower parking lots is less than 0.25 miles.

## Restrooms

Restrooms are open during regular hours and have accessible stalls.

## Public Transportation

Trimet buses 43 and 45.



Ole Belle

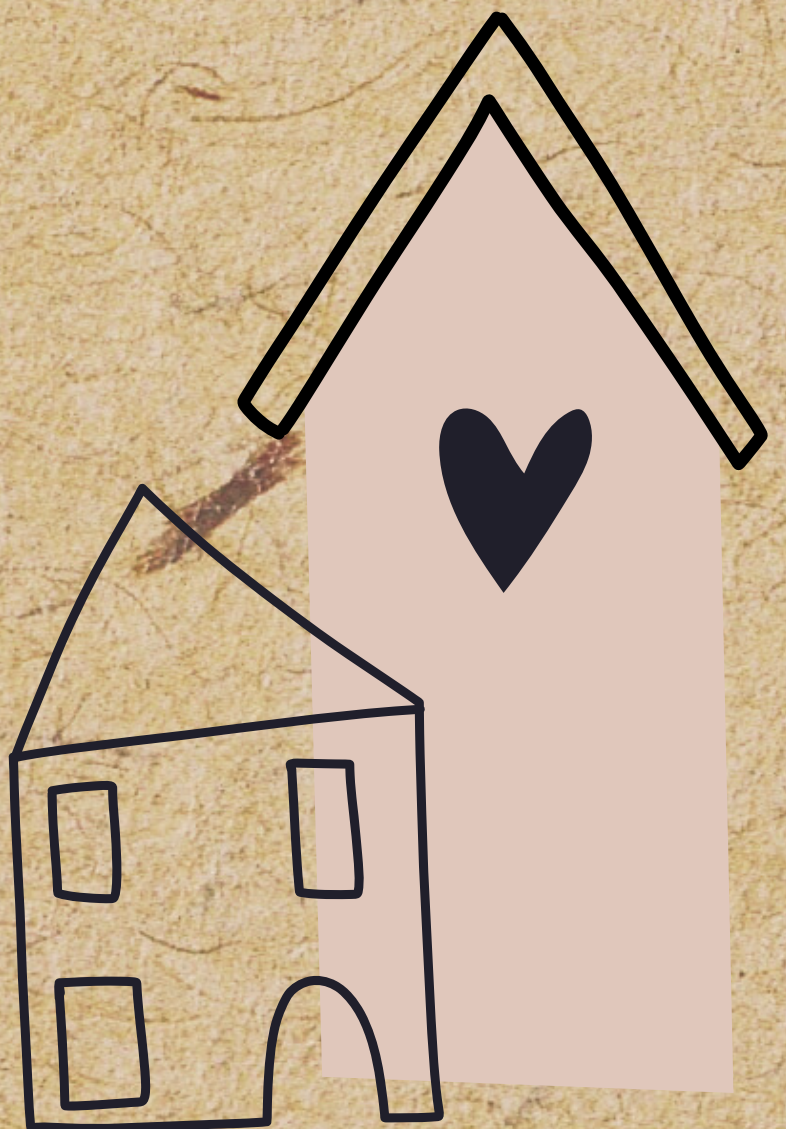
There's something in the air that  
something makes my belly rumble  
Something smells so strong, it hit me,  
almost makes me stumble  
Could it be the little people cooking  
something smelly  
In the big red cookie jar  
so I can put it in my belly....



## Geocaching

### Adventure highlights

This adventure takes you on a guided tour of the Nordic Northwest campus, including an historic cabin, wetlands, a rain garden and more.



info on the artist: Thomas Dambo